

0683-004

191

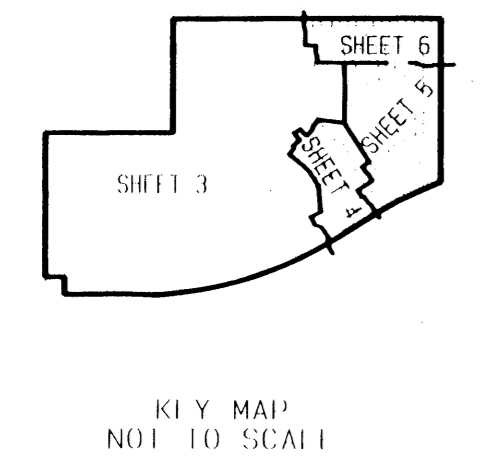
# JONES - PARCEL "D"

BEING A REPLAT OF PARCEL D, TRACT K-10 & TRACT K-14, JONES P.U.D. AS RECORDED IN PLAT BOOK 78, PAGES 71 THROUGH 78 OF THE PUBLIC RECORDS OF PALM BEACH COUNTY, FLORIDA, SITUATE IN SECTION 33, TOWNSHIP 45 SOUTH, RANGE 42 EAST, PALM BEACH COUNTY, FLORIDA

SHEET 5 OF 6

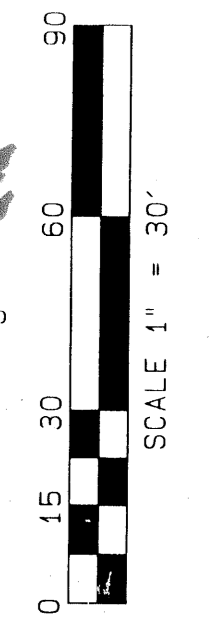
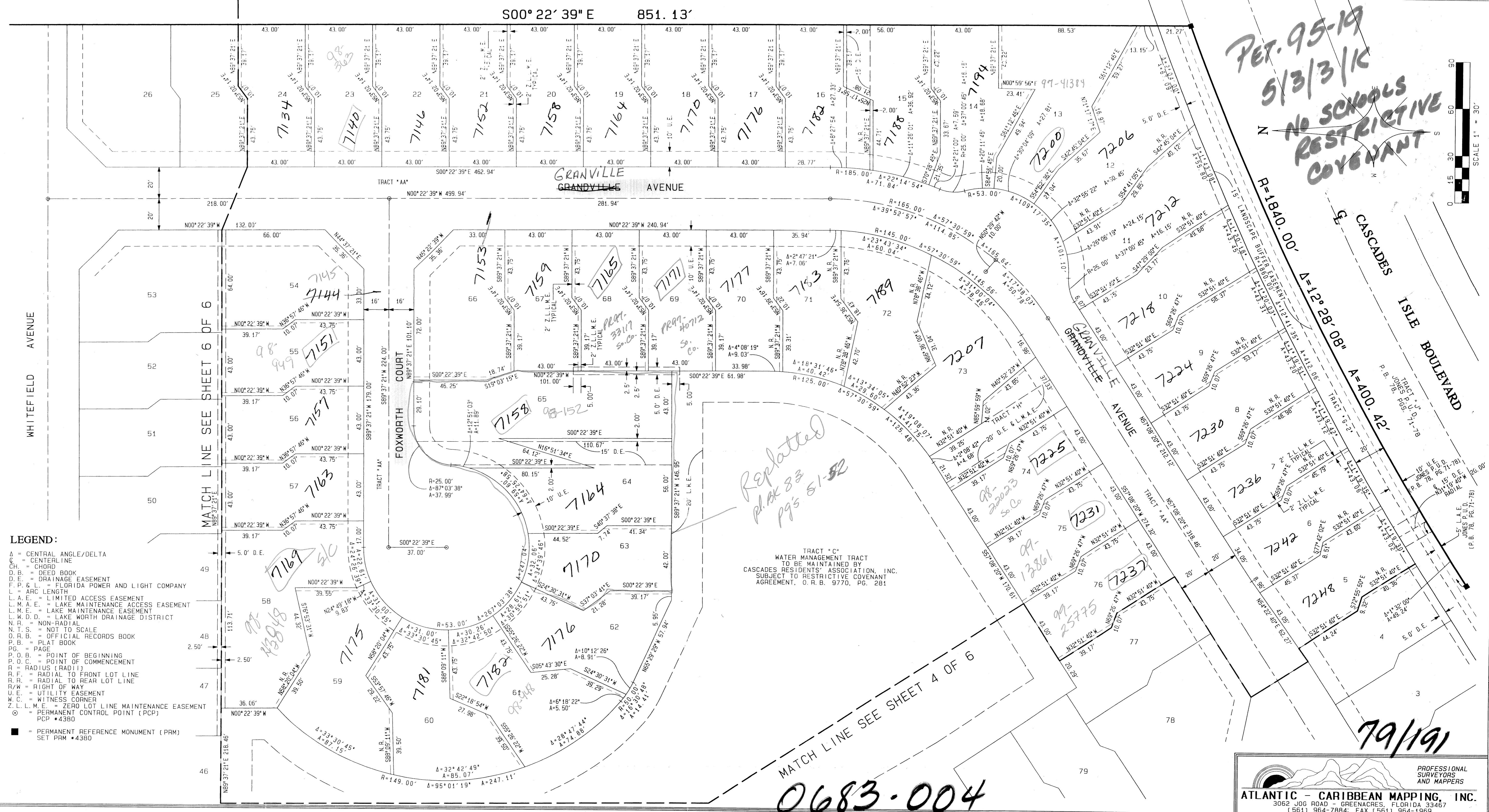
APRIL 1997

STATE OF FLORIDA }  
COUNTY OF PALM BEACH } SS  
THIS PLAT WAS FILED FOR  
RECORD AT  
THIS \_\_\_\_\_ DAY OF  
\_\_\_\_\_ AD, 1997 AND  
DULY RECORDED IN PLAT BOOK  
\_\_\_\_\_ ON PAGES \_\_\_\_\_ AND  
DOROTHY H. WILKEN, CLERK  
CIRCUIT COURT  
BY: \_\_\_\_\_ DC



TRACT "L-8"  
JONES P. U. D.  
(P. B. 78, PG. 71-78)

TRACT "K-8"  
JONES P. U. D.  
(P. B. 78, PG. 71-78)



- LEGEND:**
- Δ = CENTRAL ANGLE/Delta
  - = CENTERLINE
  - = CHORD
  - = DEED BOOK
  - = DRAINAGE EASEMENT
  - = FLORIDA POWER AND LIGHT COMPANY
  - = ARC LENGTH
  - = LIMITED ACCESS EASEMENT
  - = LAKE MAINTENANCE ACCESS EASEMENT
  - = LAKE MAINTENANCE EASEMENT
  - = NON-RADIAL
  - = NOT TO SCALE
  - = OFFICIAL RECORDS BOOK
  - = PLAT BOOK
  - = PAGE
  - = POINT OF BEGINNING
  - = POINT OF COMMENCEMENT
  - = RADIUS (RADIUS)
  - = RADIAL TO FRONT LOT LINE
  - = RADIAL TO REAR LOT LINE
  - = RIGHT OF WAY
  - = UTILITY EASEMENT
  - = WITNESS CORNER
  - = ZERO LOT LINE MAINTENANCE EASEMENT
  - = PERMANENT CONTROL POINT (PCP)
  - = PCP #4380
  - = PERMANENT REFERENCE MONUMENT (PRM)
  - SET PRM #4380

SUBDIVISION JONES  
BOOK 78  
PAGE 191  
FLOOD ZONE 2001  
FLOODING RTS  
REAR ZONE 50  
ZIP CODE 33407  
95-21  
JONES P.U.D.  
PARCEL D

TRACT "C"  
WATER MANAGEMENT TRACT  
TO BE MAINTAINED BY  
CASCADES RESIDENTS' ASSOCIATION, INC.  
SUBJECT TO RESTRICTIVE COVENANT  
AGREEMENT, O. R. B. 9770, PG. 281

0683-004

PROFESSIONAL SURVEYORS AND MAPPERS  
**ATLANTIC - CARIBBEAN MAPPING, INC.**  
3062 JOG ROAD - GREENACRES, FLORIDA 33467  
(561) 964-7884; FAX (561) 964-1969